

BLOOMBERG TUTORIAL
ECONOMIC INFORMATION RESEARCH
2018

ICN LIBRARY SERVICES

CONTENT

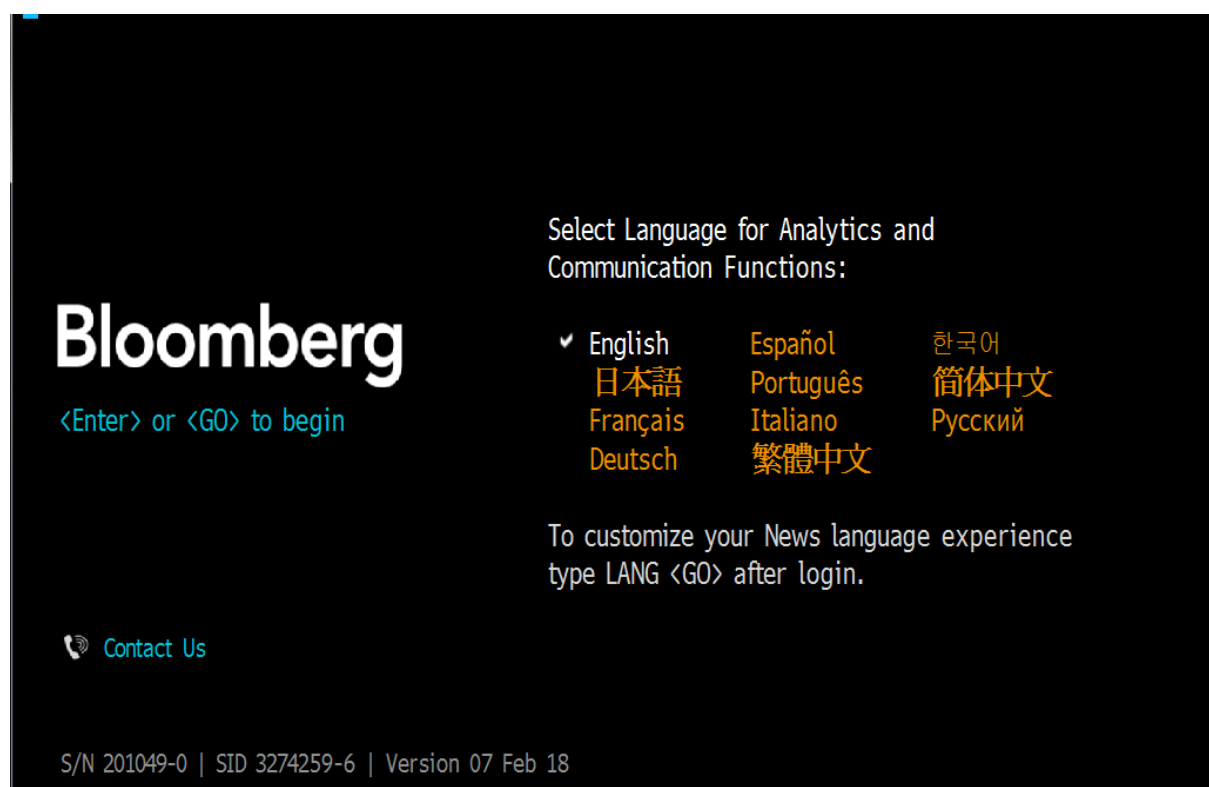
I.	Create an account	2
II.	Functions access.....	6
III.	Functions for economic information and their content.....	8
A.	Function « COUN ».....	8
B.	Function ECST	12
C.	Function ESNP	13
IV.	Data export.....	15

I. Create an account

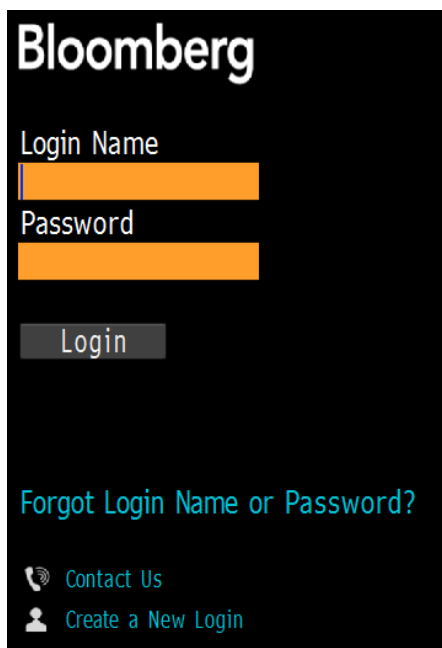
Upon starting, Bloomberg may open on 4 windows spread across your screen : only one will be useful, you can close the other 3 and leave one in full screen.

Login on a Bloomberg computer (Room 032 in Nancy or in the Metz library / no off campus access).

Choose language. « Go » = « Enter » key.



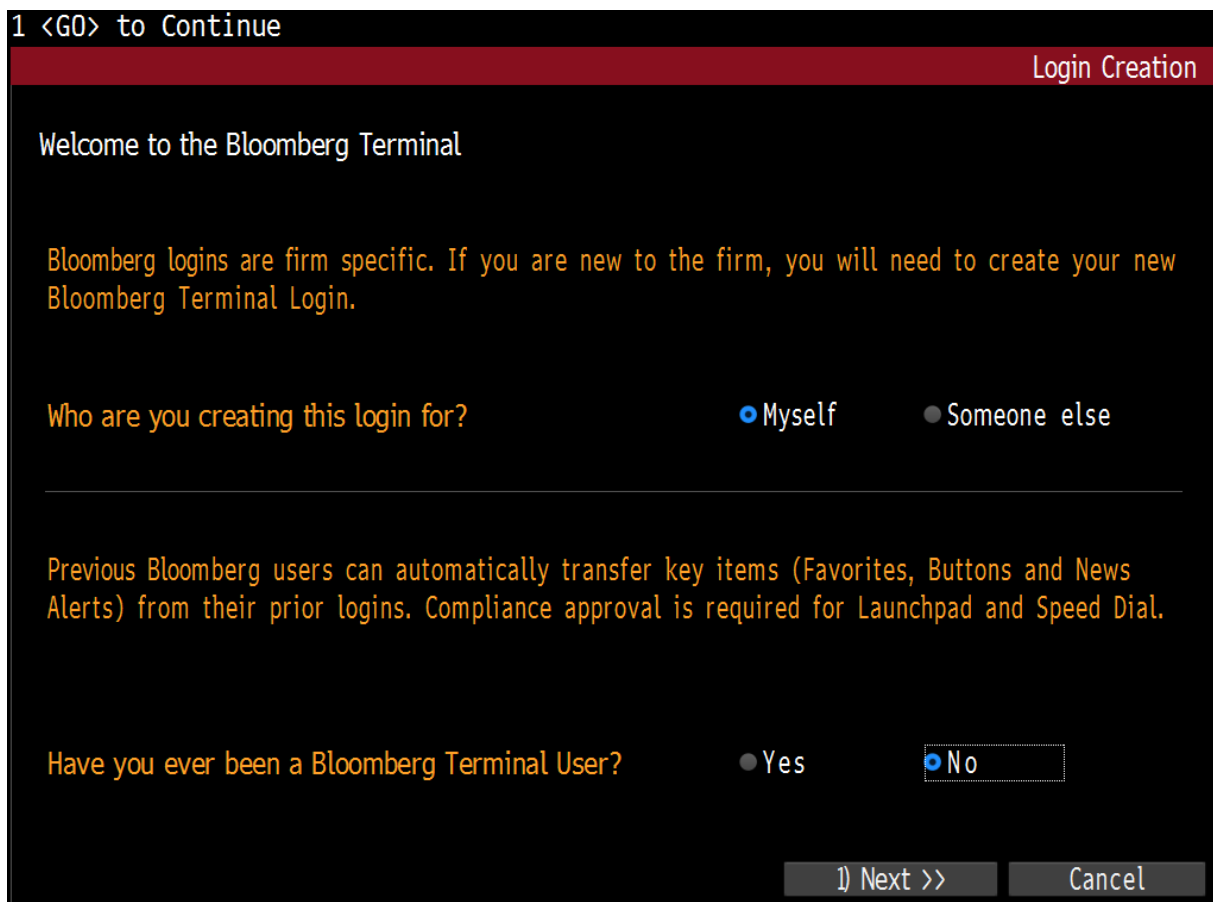
Then on the login screen, choose “Create a new log-in”



The image shows the Bloomberg login interface. At the top is the 'Bloomberg' logo. Below it are two input fields: 'Login Name' and 'Password', both with orange bars indicating they are active. A 'Login' button is positioned below the password field. At the bottom, there is a link 'Forgot Login Name or Password?' and two icons with text: a telephone icon for 'Contact Us' and a person icon for 'Create a New Login'.

Follow the different steps :

For your first connection, create your own account, for yourself and indicate that you are not a returning user.



The image shows the 'Login Creation' screen in the Bloomberg Terminal. The title bar at the top says '1 <G0> to Continue' and 'Login Creation'. The main text reads 'Welcome to the Bloomberg Terminal'. Below this, a message states: 'Bloomberg logins are firm specific. If you are new to the firm, you will need to create your new Bloomberg Terminal Login.' The question 'Who are you creating this login for?' is followed by two radio buttons: 'Myself' (selected) and 'Someone else'. A horizontal line separates this from the next section. The next section says: 'Previous Bloomberg users can automatically transfer key items (Favorites, Buttons and News Alerts) from their prior logins. Compliance approval is required for Launchpad and Speed Dial.' Below this, the question 'Have you ever been a Bloomberg Terminal User?' is followed by two radio buttons: 'Yes' and 'No' (selected). At the bottom right, there are two buttons: '1) Next >>' and 'Cancel'.

Make sure you choose a unused login. Phone number are mandatory but company and mobile can be the same. Email can be personnal or your ICN email.

Login Creation	
User Information	Security
Please enter user details. Step 1 of 2: User Information	
First Name	DOCUMENTATION
Last Name	ICN
Login Name	ICNLIBRARY ⓘ
Contact Information	
Company Phone	France + 33 - 3-8756-3711 ⓘ
Mobile Phone	France + 33 - 387-56-3711 ⓘ
Company Email	documentation@icn-artem.com ⓘ
Your Bloomberg Profile (This section is optional) ⓘ	
Title	
Focus	
<< Back 1) Next >> Cancel	

You will receive a code to activate your account. Choose how you want to receive it (email ou text message recommended).

Govt UREG Login Creation	
✓ User Information	Security
1 <G0> to Continue, <Menu> to Return	
We need to send you a verification code to verify the account. Step 2 of 2: Security	
How do you want the code to be delivered?	
<input type="radio"/> SMS Text	+33-387-56-3711 (Mobile)
<input type="radio"/> Automated Phone Call	<Select phone number>
<input checked="" type="radio"/> Email	documentation@icn-artem.com
<< Back 1) Next >> Cancel	

Enter the code on the next screen :

Login Creation

✓ User Information Security

Please enter the verification code below. Step 2 of 2: Security

An email message has been sent to documentation@icn-artem.com

Verification Code

If you have not received the code after 2 minutes, please select one of the options below.

- 2) Resend me the code.
- 3) Have a representative call me directly.

<< Back 1) Next >> Cancel

Once your the confirmation code is entered, choose your password :

1 <GO> continuer

Création de log-in

✓ Infos sur utilisateur Sécurité

Veillez créer un mot de passe. Etape 2 de 2: Sécurité

Mot de passe

Confirmer

Votre nouveau mot de passe doit:

- ✓ Contenir de 8 à 12 caractères
- ✓ Répondre à 3 des 4 critères suivants:
 - ✓ Contenir au moins 1 lettre majuscule
 - ✓ Contenir au moins 1 lettre minuscule
 - Contenir au moins 1 chiffre
 - ✓ Contenir au moins 1 caractère spécial

1) Suiv. >> Annuler

Then set up the last parameters of your profile.

1<GO> to Save

Personal Defaults - Quick Setup

Default Country/Region **FRANCE**

Regional Defaults

Currency for Cross-currency Screens **EUR**

Preferred Language **Français**

Time Zone **GMT+1:00 Berlin, Stockholm, Rome, Bruss**

News Defaults

Top News Category **EULD** 3) /

My Languages **EN, FR** 4) /

Equity Exchange Defaults

Country/Exchange Choice 1 **France** Primary Exchange Only

Country/Exchange Choice 2 **U.S.** Primary Exchange Only

Save then go back to Bloomberg's homepage to enter your login and password, then access the whole content of Bloomberg.

II. Functions access

Bloomberg terminals displays its content through 'functions'. Each function offers a different set of data, analysis and information.

To access a function, the process is always the same :

Launch a research or enter the beginning of the code/shortcut of the function in the research bar.

CANCEL HELP SEARCH NEWS QUOTE QUOTE MSG MENU PRINT PG BA PG FW

< > No Security Loaded CANN Related Functions Menu Message ★ 📄 ⚙️ ?

BTRS – Total Return Swaps on the Bloomberg Barclays Indices

Gain synthetic exposure to cash bonds with total return swaps on the leading fixed income benchmarks globally.

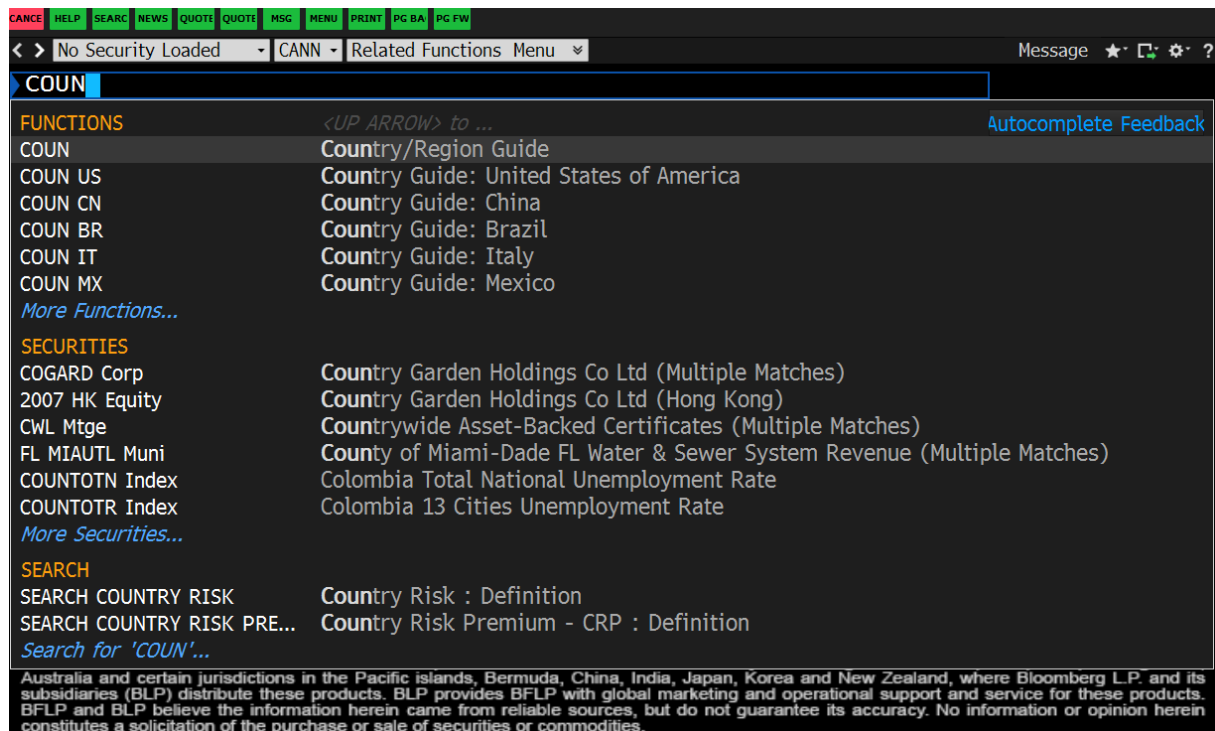
BTRS <GO> [LEARN MORE](#)

Your Sales Representative and Account Manager is:
MATTHIAS BOUCHER +44-20-35254076

🔍 **HELP DESK**
For functionality questions

📄 **REQUEST TRAINING**
For functionality training

📞 **CONTACT US**
For general inquiries



Bloomberg has an autocomplete system : choose to access your function (first suggestion) or make another choice among those that are offered if needed.

For an economic research, there are three main functions :

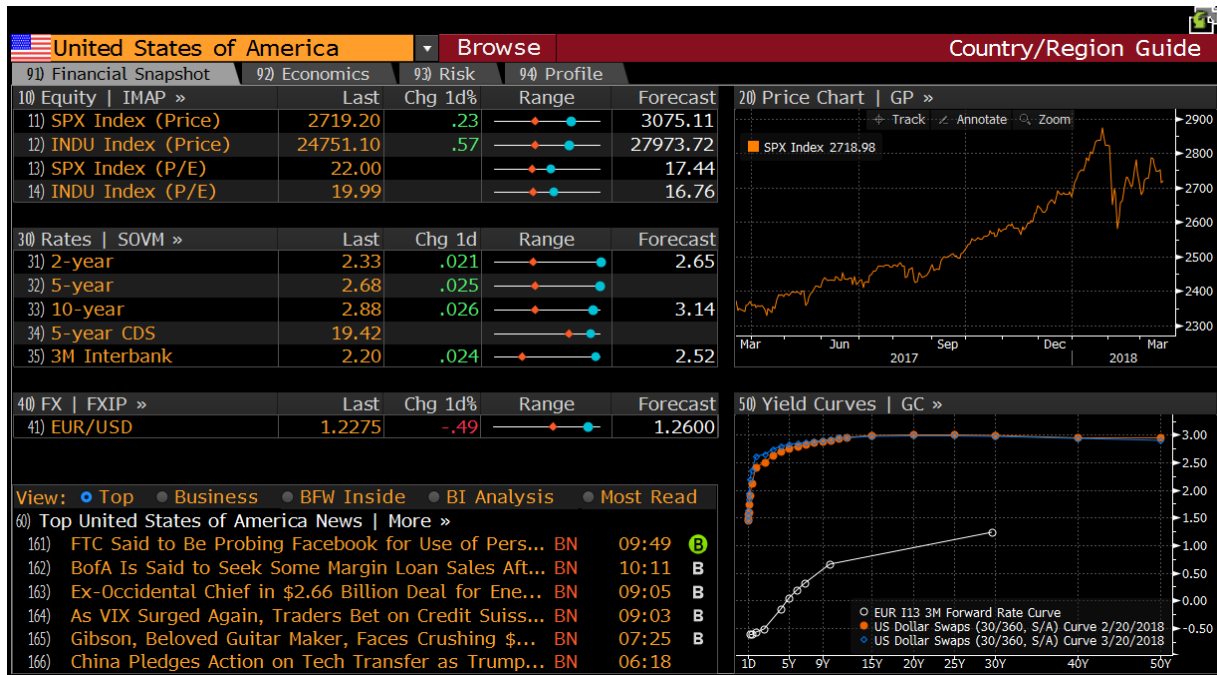
- COUN : Country
- ECST : World Economic Statistics
- ESNP : Economic statistics by country

III. Functions for economic information and their content

A. Function « COUN »

COUN = Country. Offers basic information on a country, Bloomberg data and news.

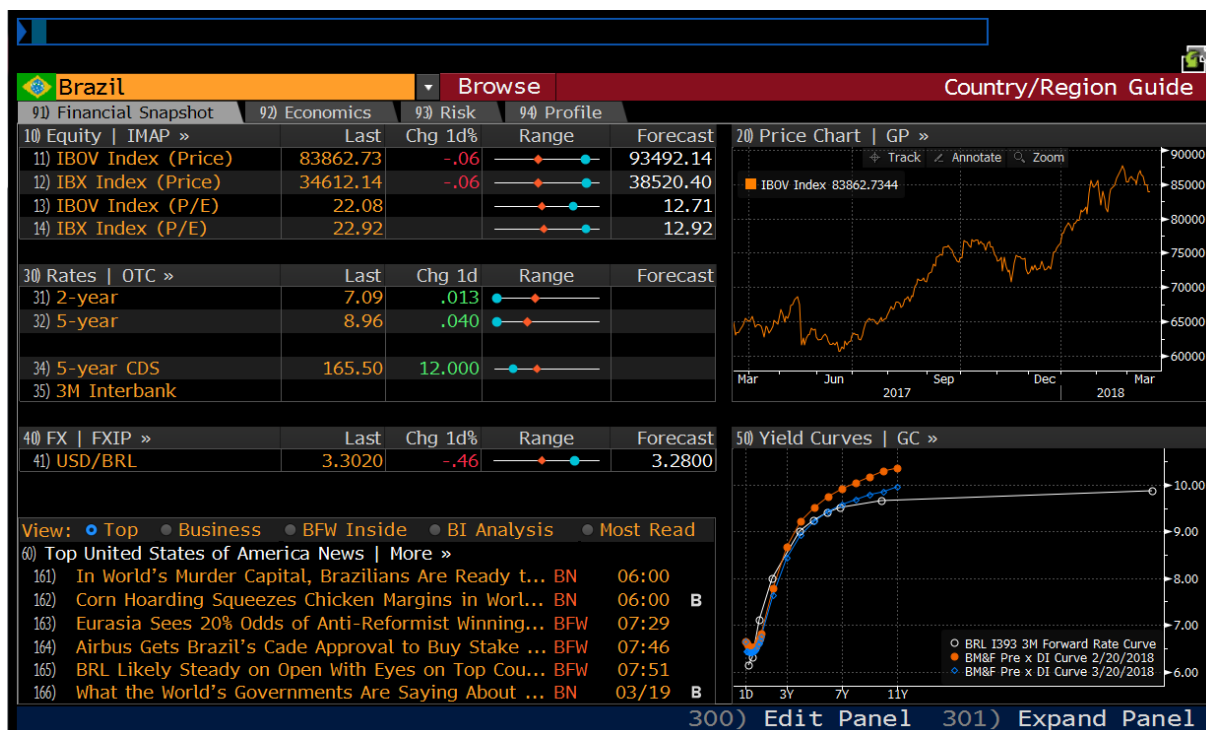
We land directly on the default country set up in our profile parameters. To change, choose the arrow next to the country name or choose “Browse”.



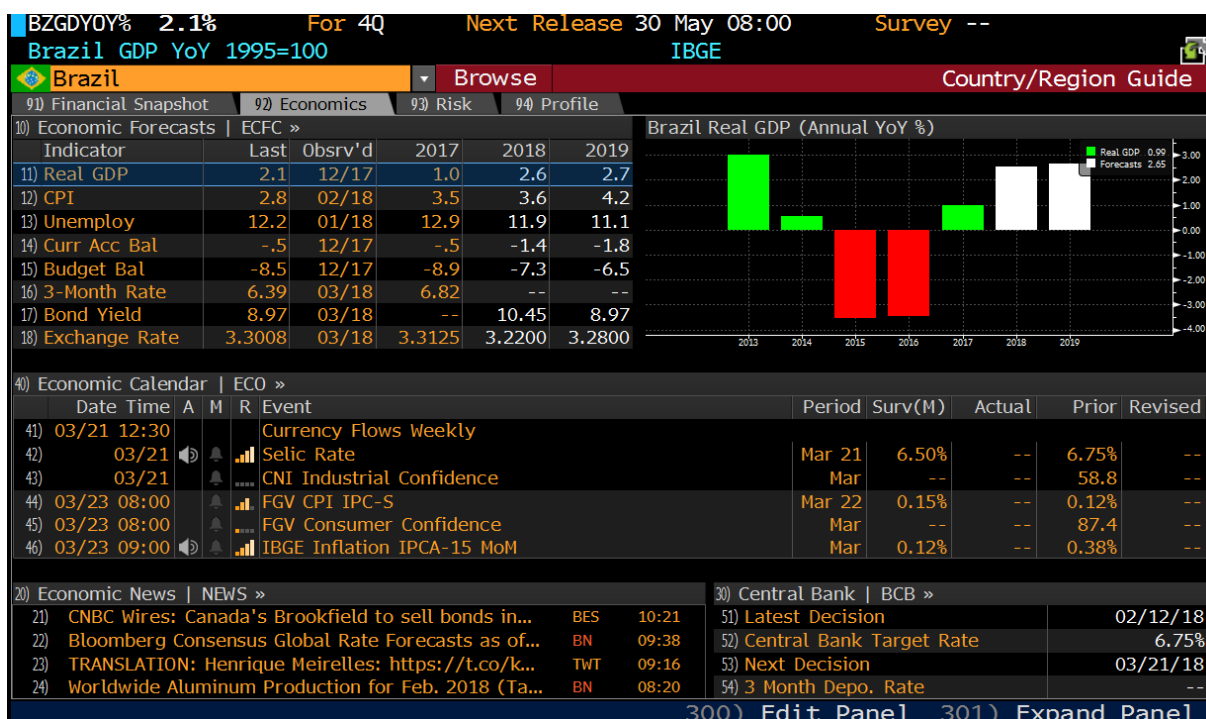
In this example, we will use 'Browse' To choose to work on Brazil.



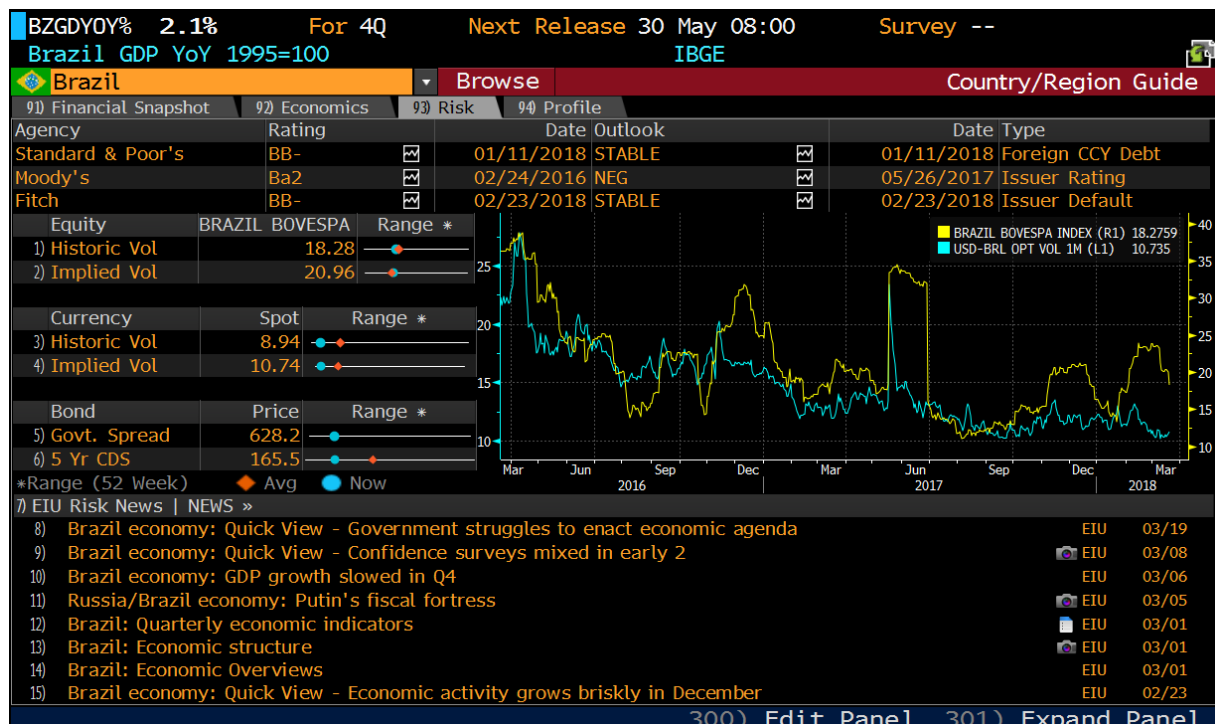
Information available when arriving on the country page : Financial snapshot with data on equity, price chart, rates, yield curves, change rate \$/local currency, latest economics and financial news. Each bloc can be clicked and open to get more content.



The « Economics » tag offers : economic forecast, GDP chart (dates can be changed when opening the chart), economic calendar, economic news, data from the central bank. Again each bloc can be opened to learn more.



The « Risk » tag offers information about the debt of the country and its financial risk, as well as its rating by different agencies. Each bloc can be opened to get more data.



The « Profile » tab display : a country overview with its main export and production markets, a map, basic information on its government/leadership, key numbers, stock exchange profile. Each bloc can be clicked and open with more information.



Information from the « Country / region overview » panel can be useful for an economic study. Here is its content :

1323Z BZ Equity		Settings ▾	Page 1/9	Description: Issuer
25) Issuer Description				
Pages	51) Basic Information (1323Z BZ Equity) DES »			
11) Summary	Federative Republic of Brazil is a country located in Eastern South America, bordering the Atlantic Ocean. The Country's natural resources include bauxite, gold, iron ore, manganese, nickel, phosphates, platinum, tin, uranium, petroleum, hydropower and timber.			
12) Government Info				
13) Eco Fundamentals				
14) Debt Summary				
15) Credit Health				
16) Major Creditors				
17) Recent Cap Mkts				
18) Identifiers				
19) Additional Info				
Quick Links	Economic Fundamentals - BRL			
31) BRC FI Rsch	61) Debt Due in 12 Months or Less	556.93 MM	03/20/18	
32) RSKC Risk	62) Unemployment Rate	12.20	01/31/18	
33) DRSK BB Df Risk	63) Consumer Price Index	2.84	02/28/18	
34) CDSV CDS Curve	64) FX Reserves as a % of World Reserves	3.31	03/16/18	
35) RELS Rel Secs	71) Credit Rating CRPR »			
36) CACS Corp Acts	Moody's			
37) RVRD Rel Val	Outlook	NEG	05/26/17	
	Long-Term	Ba2	05/26/17	
	Local Currency Issuer	Ba2	02/24/16	
	Foreign Currency Issuer	Ba2	02/24/16	
	Standard & Poor's			
	Outlook	STABLE	01/11/18	
300) Edit Panel 301) Expand Panel				

The whole left menu can be clicked and access to display more data. Same for the bloc in the center of the screen.

B. Function ECST

ECST, for « World Economic Statistics » offers economic statistics by country.

We can find information sorted by themes here on the left menu of the ECST screen :

90<Go> to Export

91) Search 92) Settings World Economic Statistics

94) Standard Views 95) Custom Views

France 1) Browse

Key Indicators

- National Accounts
 - Consumer Prices
 - Producer Prices
 - Labor Market
 - Economic Activity
 - Business Conditions
 - Leading Indicators
 - Housing Market
 - Retail Sector
 - Consumer Confidence
 - Personal Sector
 - External Sector
 - Government Sector
 - Monetary Sector
 - Financial Indicators
- National Accounts (GDP)
- Prices
- Labor Market
- Retail & Wholesale Sector
- Industrial Sector
- Services Sector
- Whole Economy Activity
- Surveys/Cyclical Indicators

Maximize Chart

	Ticker	Current		Previous	
		Value	Date	Value	Date
11) Real GDP (swda, qoq%)	FRGEGDPQ ...	0.6	Q4 2017	0.5	Q3 2017
12) Real GDP (swda, yoy%)	FRGEGDPY ...	2.5	Q4 2017	2.3	Q3 2017
13) Private Consumption (q...)	FRGEHOUQ ...	0.2	Q4 2017	0.6	Q3 2017
14) Gross Fixed Capital Inv...	FRGEFCAQ ...	1.2	Q4 2017	0.9	Q3 2017
15) Government Consumpti...	FRGEPUBQ ...	0.3	Q4 2017	0.5	Q3 2017
16) Exports (qoq %, sa)	FRGEEXPQ ...	2.4	Q4 2017	1.0	Q3 2017
17) Imports (qoq %, sa)	FRGEIMPQ ...	0.3	Q4 2017	2.2	Q3 2017
18) Real Domestic Demand ...	FRGEDEMQ ...	0.0	Q4 2017	0.9	Q3 2017
19) Nominal GDP (qoq %)	FRNGGDPQ ...	0.7	Q4 2017	0.7	Q3 2017
20) GDP Deflator (qoq %)	FRGEDEFQ ...	0.4	Q4 2017	0.2	Q3 2017

300) Edit Panel 301) Expand Panel

The « International trade and BoP » contains information especially interesting for an applied economics study :

-Intl Trade & BoP

- International Trade Balance ...
 - Exports (Nominal/Value)
 - Imports (Nominal/Value)
- International Trade Balance ...
 - Exports (Real/Volume)
- Balance of Payments
 - Current Account
 - Financial (& Capital) Account
- Terms of Trade
 - Import Price Indexes
- Foreign Investment
 - Foreign Direct Investment
- Tourism
 - Tourist Arrivals
- International Investment Po...

With this button, we can create graphs based on each set of data with the dates of our choice.

C. Function ESNP

The ESNP function (Economic statistics by country) presents a summary of economic data for each country as tables or graphs ready for export.

We can find numbers and analysis on a global scale (global economic numbers, world economic forecasts, world economic matrix...) as well as information by country.

Enter ESNP in the search bar :

REPUBLIC OF BRAZ Equity | ECST | Related Functions Menu | Message

ESNP

FUNCTIONS <UP ARROW> to hide Autocomplete Feedback

ESNP Economic Statistics at a Glance

Launchpad » Economic Statistic Update **ESNP**

SECURITIES

ESNPD1NP Index Eurostat Belgium DOEL 1 Net Electrical Energy Produced GWh

ESNPD1ME Index Eurostat Belgium DOEL 1 Max Electrical Power Net MW

ESNPD1EG Index Eurostat Belgium DOEL 1 Electrical Energy Generated GWh

ESNPD1LF Index Eurostat Belgium DOEL 1 Load Factor %

ESNPD1EA Index Eurostat Belgium DOEL 1 Energy Availability Factor %

ESNPD1EL Index Eurostat Belgium DOEL 1 Net Energy Loss Planned GWh

ESNPD1EP Index Eurostat Belgium DOEL 1 Thermal Energy Produced GWh

ESNPD1FX Index Eurostat Belgium DOEL 1 Unplanned Unavailability External Reasons %

ESNPD1MO Index Eurostat Belgium DOEL 1 Max Output Capacity MW

More Securities...

SEARCH

Search for 'ESNP'...

Foreign Investment

Foreign Direct Investment

Tourism

Tourist Arrivals

International Investment Po...

Government Finance & Debt

Monetary Sector

Economic Statistics

Value	Date
0.5	Q3 2017
2.3	Q3 2017
0.6	Q3 2017
0.9	Q3 2017
0.5	Q3 2017
1.0	Q3 2017
2.2	Q3 2017
0.9	Q3 2017
0.7	Q3 2017
0.2	Q3 2017

The function then offers access by country or direct access to global data :

Enter # <GO> to select category! <PAGE> for more categories.

ECONOMIC STATISTIC SNAPSHOTS Page 1 of 3

1) World Economic Releases 2) Economic Survey 3) Economic Statistics

4) Global View 5) Global Economic View

6) Economic Data Finder

'Euro Bloc' Countries

17) CTRB Eurostat

'G7' Countries

18) Canada 21) Italy

19) France 22) Japan

20) Germany 23) UK

24) United States

7) Argentina 31) Ecuador

8) Australia 32) Egypt

9) Austria 33) El Salvador

10) Bahrain 34) Estonia

11) Belgium 35) Finland

12) Bolivia 36) Georgia

13) Brazil 37) Greece

14) Bulgaria 25) Colombia 28) Czech Rep 38) Hong Kong

15) Chile 26) Costa Rica 29) Cyprus 39) Hungary

16) China 27) Croatia 30) Denmark 40) Iceland

Data sets are presented in tables. We can change indicators or turn tabs into graphs using the relevant buttons.

1) Charts

2) Export

Economic Data Watch

Country Brazil

Indicator National Accounts

	Indicator	Q1 17	Q2 17				Q3 17			Q4 17			Q1 18		
		Mar	Apr	May	Jun	Jul	Aug	Sep	Oct	Nov	Dec	Jan	Feb	Mar	
11)	<input checked="" type="checkbox"/> National Accounts														
12)	Real GDP (yoy %)	-0.0	--	--	0.4	--	--	1.4	--	--	2.1	--	--		
13)	Real GDP (qoq % sa)	1.3	--	--	0.6	--	--	0.2	--	--	0.1	--	--		
14)	Private Consumption (yoy %)	-1.7	--	--	0.6	--	--	2.2	--	--	2.6	--	--		
15)	Gross Fixed Capital Formation	-3.7	--	--	-6.7	--	--	-0.5	--	--	3.8	--	--		
16)	Government Consumption (yoy %)	-0.5	--	--	-0.8	--	--	-0.6	--	--	-0.4	--	--		
17)	Exports (yoy %)	1.8	--	--	2.5	--	--	7.6	--	--	9.1	--	--		
18)	Imports (yoy %)	9.8	--	--	-3.2	--	--	5.7	--	--	8.1	--	--		
19)	Nominal GDP (BRL bn)	1585	--	--	1631	--	--	1641	--	--	1703	--	--		
20)	Economic Activity Indicator (I)	-0.3	-0.0	-0.3	0.4	0.3	-0.3	0.3	0.3	0.4	1.2	-0.6			
21)	<input checked="" type="checkbox"/> Consumer Prices														
22)	IPCA Consumer Price Index (C)	0.2	0.1	0.3	-0.2	0.2	0.2	0.2	0.4	0.3	0.4	0.3	0.3		
23)	IPCA Consumer Price Index (C)	4.6	4.1	3.6	3.0	2.7	2.5	2.5	2.7	2.8	3.0	2.9	2.8		
24)	IPCA-15 Consumer Price Inde	0.1	0.2	0.2	0.2	-0.2	0.3	0.1	0.3	0.3	0.3	0.4	0.4		
25)	IPCA-15 Consumer Price Inde	4.7	4.4	3.8	3.5	2.8	2.7	2.6	2.7	2.8	2.9	3.0	2.9		

300) Edit Panel

301) Expand Panel

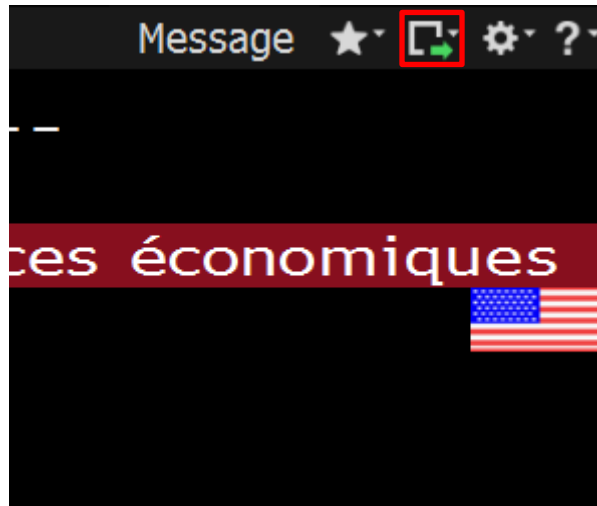
Available ESNP indicators are :

Economic Data Watch	
National Accounts	
National Accounts	Retail Sector
Consumer Prices	Consumer Confidence
Producer Prices	Personal Sector
Labor Market	External Sector
Economic Activity	Government Sector
Business Conditions	Monetary Sector
Leading Indicators	Financial Sector
Housing Market	

IV. Data export

Anytime on Bloomberg, we can export the data we are looking at.

Use the 'export data' button :



This button offers the following data treatment options :

- Send by email,
- Send by Bloomberg message,
- Screenshot (then paste into Paint, Word or other)
- Print the window
- "See screen as image" opens an image of the screen in a web browser window so we can save it and reuse it as needed.

Bloomberg assistance :

documentation@icn-artem.com